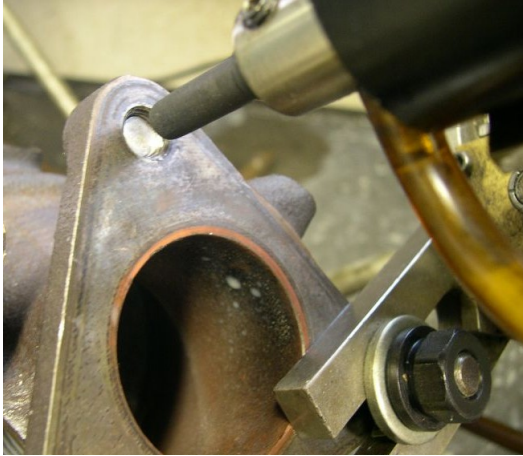


Typical stud removal job.

Rev 4



Broken 8mm stud in catalytic converter.



After EDM'ing hole.
Thin sleeve of threads left.



After picking out about half the threads.

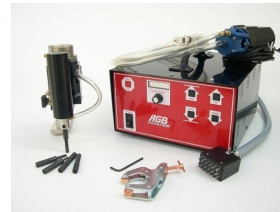


Pickings.



Shows setup and cleanup of threads with tap.

The AGB Portable EDM Model 2



For Sales and Service contact:
Email: gordon@portableedm.com
Phone: (707) 445-9111 Fax: (707) 445-0903